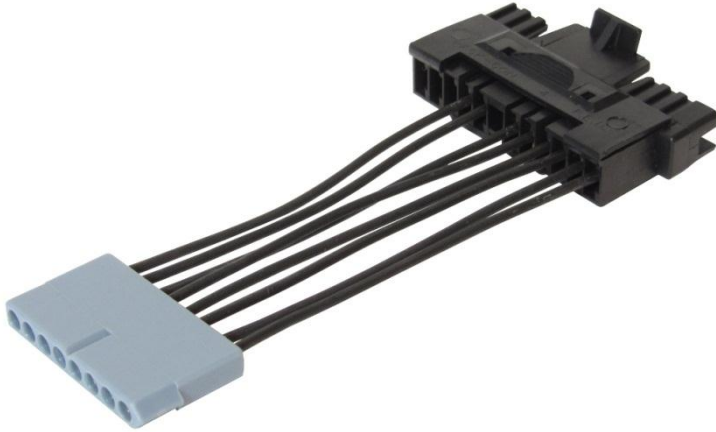




Mopar Wiring Adapter 70-74

Part No. FR20118-6



The Mopar Wiring Adapter (FR20118-6) unites the 4-1/4" female connector from your Flaming River column wiring harness with the stock 8-pin Mopar connector in your vehicle. This adapter is designed for Mopar vehicles from 1970 to 1974 that commonly use this style connector in turn signal switch wiring harnesses.

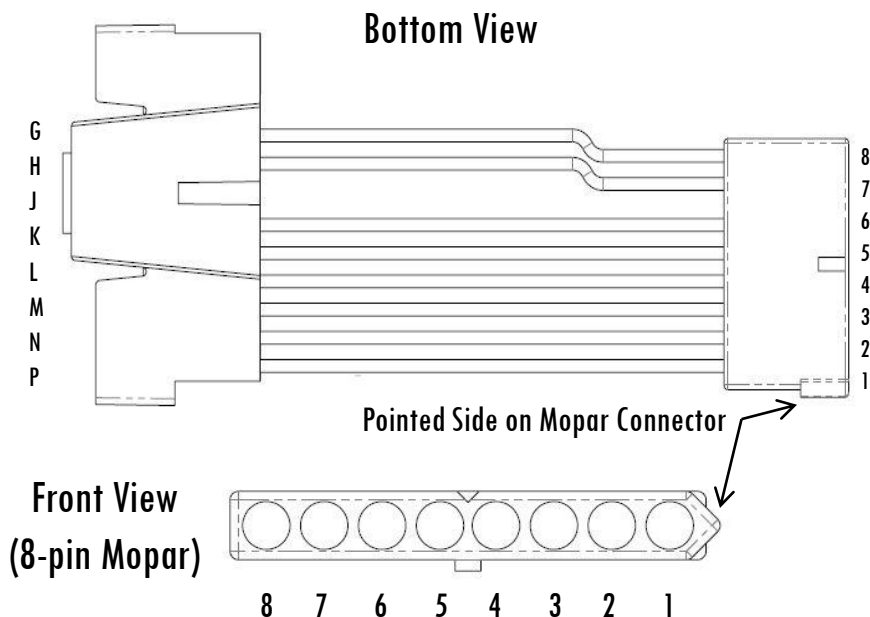
Visit **FlamingRiver.com** for Tech Tips

Call Us Toll Free

Telephone: 1-800-648-8022

Fax: 1-800-243-5263

FR20118-6 Adapter Pin-Out



Function	Flaming River Connector	Mopar Connector
Horn Relay (+12V)	G	8
Left Front Turn Signal	H	7
Right Front Turn Signal	J	6
Hazard Power (+12V)	K	5
Turn Signal Power (+12V)	L	4
Left Rear Turn Signal	M	3
Right Rear Turn Signal	N	2
Brake Light Power (+12V)	P	1